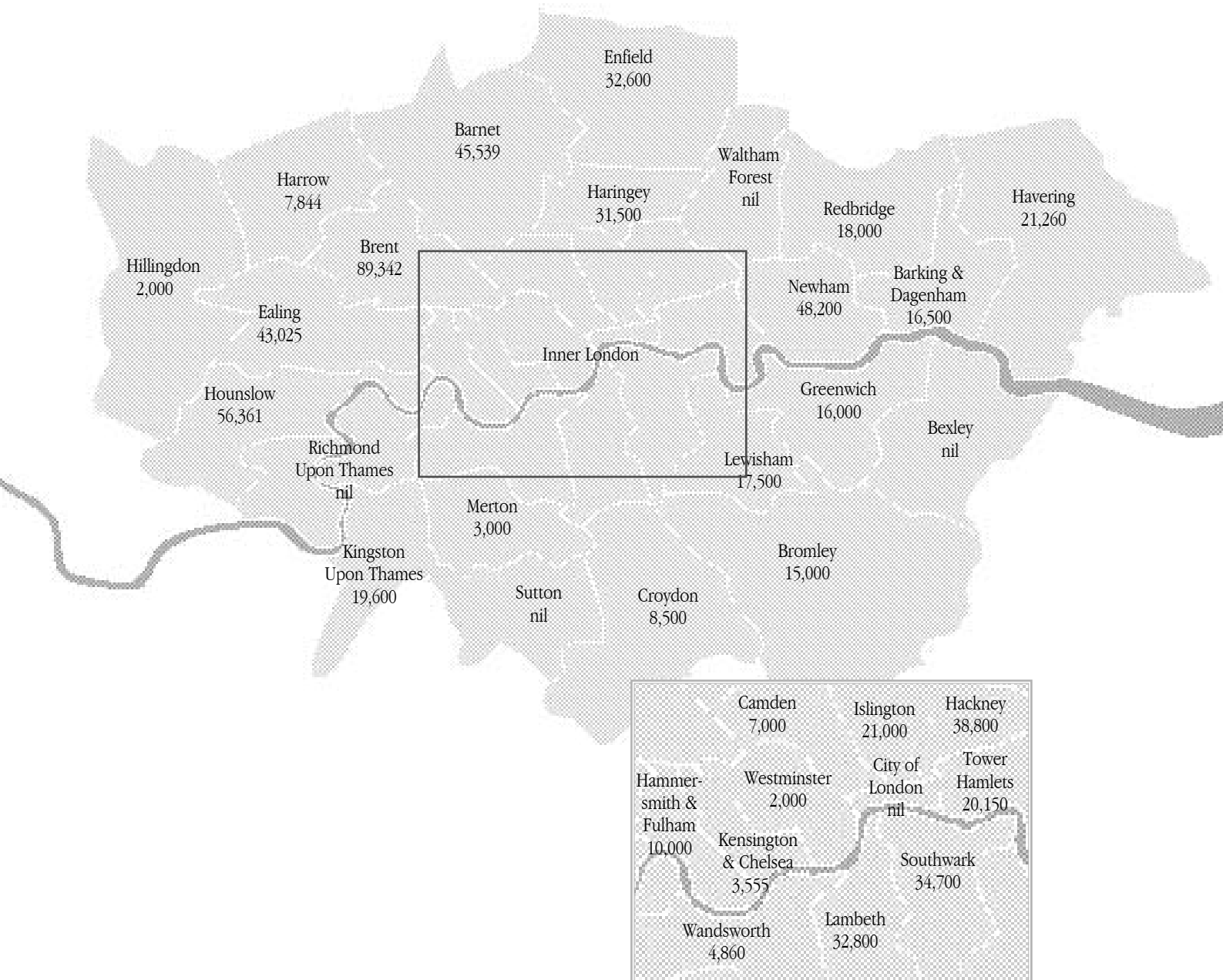


Trust for London grants 2001 by Borough (£)



Trust for London grants 2001 by Borough

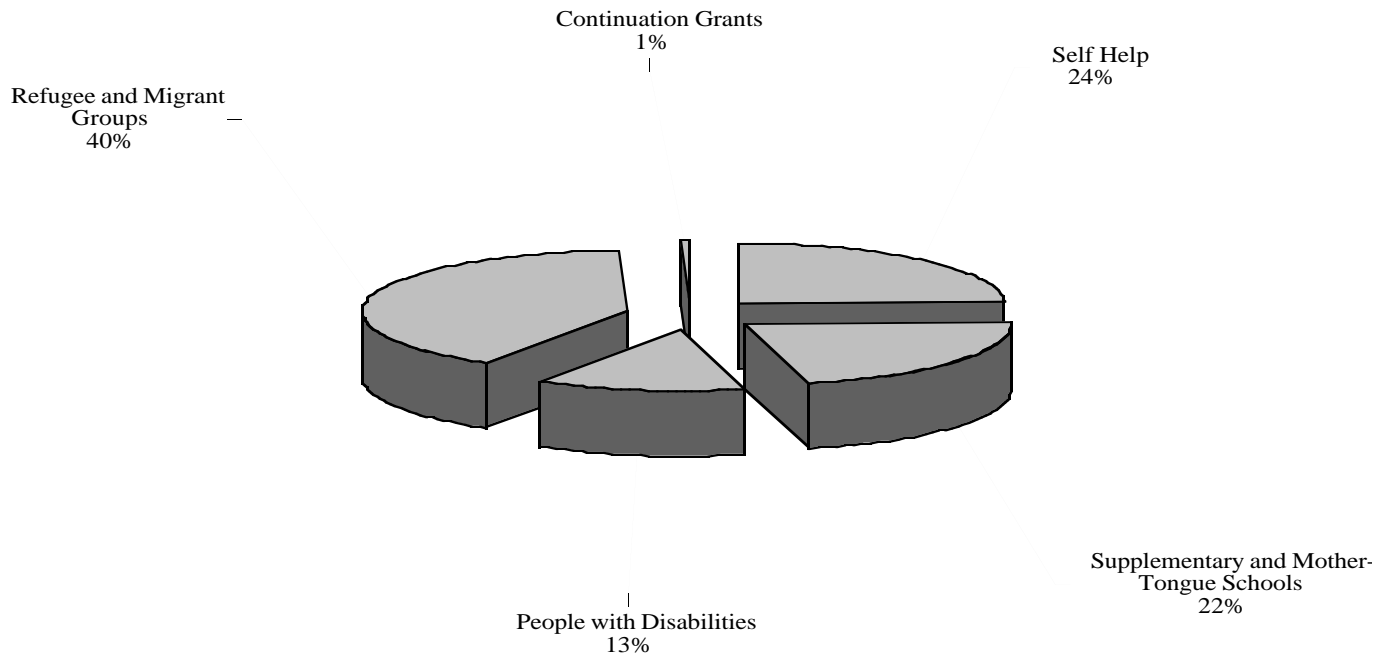
	2001	2000	1999	1998	1997
	Amount £	Amount £	Amount £	Amount £	Amount £
Barking & Dagenham	16,500 (2)	8,000 (2)	- (-)	- (-)	7,522 (1)
Barnet	⁴ 45,539 (6)	6,455 (3)	⁴ 25,000 (3)	24,036 (6)	13,250 (3)
Bexley	- (1)	3,000 (1)	1,500 (1)	10,000 (1)	30,850 (4)
Brent	¹ 89,342 (12)	31,540 (5)	6,000 (2)	20,815 (4)	³ 51,000 (4)
Bromley	15,000 (2)	14,400 (4)	1,000 (1)	22,500 (6)	21,250 (3)
Camden	7,000 (1)	26,162 (4)	³ 26,200 (4)	14,580 (3)	30,000 (4)
Croydon	8,500 (2)	11,650 (4)	20,650 (3)	18,420 (3)	26,500 (6)
City of London	- (-)	- (-)	- (-)	- (-)	- (-)
Ealing	⁵ 43,025 (6)	8,500 (2)	1,200 (1)	6,390 (2)	1,760 (1)
Enfield	32,600 (3)	27,400 (4)	17,840 (4)	13,000 (3)	10,000 (1)
Greenwich	16,000 (4)	21,300 (3)	8,200 (4)	² 50,200 (6)	33,912 (5)
Hackney	38,800 (8)	¹ 58,273 (12)	¹ 29,600 (8)	14,000 (3)	² 53,622 (6)
Hammersmith & Fulham	10,000 (1)	4,890 (2)	15,000 (4)	- (-)	22,000 (4)
Haringey	31,500 (3)	8,000 (4)	3,500 (4)	¹ 77,910 (9)	22,000 (3)
Harrow	7,844 (2)	² 43,600 (7)	14,300 (4)	11,520 (3)	39,000 (3)
Havering	21,260 (3)	- (-)	2,640 (1)	5,000 (2)	11,278 (3)
Hillingdon	2,000 (1)	16,500 (5)	- (-)	1,000 (1)	6,000 (2)
Hounslow	² 56,361 (8)	26,500 (4)	4,125 (3)	3,000 (1)	11,700 (2)
Islington	21,000 (5)	³ 39,700 (6)	14,505 (4)	⁵ 30,000 (5)	29,300 (6)
Kensington & Chelsea	3,555 (1)	5,000 (1)	7,500 (3)	⁴ 39,000 (7)	5,000 (1)
Kingston	19,600 (3)	8,000 (2)	14,000 (2)	- (-)	6,200 (1)
Lambeth	32,800 (8)	⁴ 38,060 (8)	20,000 (8)	13,000 (4)	- (-)
Lewisham	17,500 (7)	31,600 (7)	8,000 (4)	9,600 (3)	31,000 (5)
Merton	3,000 (1)	22,000 (3)	11,000 (3)	6,200 (3)	⁴ 43,160 (3)
Newham	³ 48,200 (7)	⁵ 37,000 (5)	² 29,100 (6)	18,000 (5)	¹ 59,000 (9)
Redbridge	18,000 (2)	27,500 (3)	6,200 (3)	18,166 (4)	26,320 (3)
Richmond	- (-)	6,000 (1)	- (-)	21,000 (2)	6,500 (2)
Southwark	34,700 (8)	11,000 (4)	3,500 (2)	19,150 (4)	⁵ 41,100 (7)
Sutton	- (-)	17,365 (2)	19,500 (3)	19,200 (2)	28,000 (3)
Tower Hamlets	20,150 (6)	29,030 (8)	20,600 (8)	17,500 (5)	24,157 (6)
Waltham Forest	- (-)	24,300 (4)	- (-)	³ 43,196 (6)	17,000 (1)
Wandsworth	4,860 (1)	2,000 (1)	⁵ 23,000 (3)	3,300 (1)	22,000 (4)
Westminster	2,000 (1)	14,000 (1)	18,900 (3)	27,400 (4)	9,000 (2)
Borough Total	666,636 (115)	628,725 (122)	372,560 (99)	577,083 (108)	739,381 (108)
London Wide	28,040 (7)	12,000 (6)	206,800 (11)	156,120 (12)	123,252 (12)
TOTAL	694,676 (122)	640,725 (128)	579,360 (110)	733,203 (120)	862,633 (120)

() number of grants

¹ ranking in each year

Grant allocation

Trust for London funding categories



Trust for London grants made in 2001

	No. of grants	Amount £	%
People with disabilities	14	89,853	13
Supplementary and Mother-tongue Schools	23	149,602	22
Refugee and Migrant Groups	50	281,272	40
Self-help Groups	34	169,949	24
Continuation	1	4,000	1
Training	-	-	-
Special Initiatives	-	-	-
TOTAL	122	694,676	100



Grants listing for year 2001

Grants are for the amounts stated and may be a contribution towards total costs. The grants listed below total £694,676.

Grants may be made for work in a locality as well as for work in a wider area.

Grant terms are listed by number of years 1, 2 and 3.

Name	Borough	Contribution	Period in years	Amount £
Self help				
African Caribbean Re-Union	Hackney	towards volunteers' expenses, training and running costs.	1	2,000
African Women's Forum	Ealing	towards running costs.	1	3,000
Anand Mandal Asian Elderly Group	Islington	for volunteers' expenses.	2	7,000
Asian Women's Aid Zone	Redbridge	towards rent, salaries of part-time workers and volunteers' expenses.	1	4,000
Bangladeshi Mothers Support Group	Tower Hamlets	towards running costs.	1	3,500
Bellingham Festival Foundation	Lewisham	towards the administrative costs of the festival.	1	5,000
Charity Section Balham - Drop in Centre	London Wide	towards running costs and the weekly drop-in session.	1	3,000
Dagenham Baptist Church	Bark and Dag	towards the costs of providing disability access.	1	8,500
Ealing No. 1 Old Age Pensioners Club	Ealing	towards general running costs, rent, entertainment and outing costs.	2	4,000
Explorers Club	Southwark	towards administrative expenses, outings and transport costs.	1	3,100
Ezer North West Ltd	Barnet	for training costs and capital costs.	1	5,275
Fair and Share Asian Women's Group	Newham	towards rent and volunteers' expenses.	2	6,000
Get Set Girls	Hackney	for salary of a part-time worker and activities costs.	1	4,500
Greenwich Cyclists <i>www.greenwichcyclists.org.uk</i>	Greenwich	towards the group's pilot programme.	1	2,000
Harold Wood War Memorial Institute	Havering	towards the salary and on-costs of the part-time administrative assistant.	1	7,260
Havering Asian Social and Welfare Association	Havering	towards rent, salaries of sessional workers and running costs.	1	7,000
Hendon Satsang Mandal	Barnet	towards the costs of room hire.	1	2,264
Hounslow Pensioners Forum	Hounslow	towards running costs and for the salary of the administrative support officer.	1	4,235
Islington Music Centre	Islington	for the purchase of musical instruments and a computer.	1	3,000
Kingsland Youth Choirs	Hackney	towards the salary of the part-time administrator, the purchase of a computer and running costs.	3	6,300
Lady's Creative Centre	Ealing	towards rent and the administrator's fees.	2	10,000
Points of View Tower Blocks Group	Newham	towards running costs.	2	10,000
Progothi Women's Trust	Newham	towards the salary of a part-time administrator and running costs.	1	5,000
Rainbow Community Care Association	Hackney	towards the salaries of a part-time tutor, a part-time co-ordinator and running costs.	2	6,000
Shaiba Age Care	Lewisham	towards venue rental, equipment and consumable supplies.	1	1,500
St Matthew's Creative Dance Group	Southwark	towards running and training costs.	2	4,000
Stoned Arts	Brent	as a contribution towards running costs.	2	13,655
Third Collier Row Scout Group <i>www.thirdcollierrow.bizland.com</i>	Havering	towards the capital work to the hut.	1	7,000

Upper Norwood Community Resource Association	Lambeth	towards equipment and running costs.	1	4,000
Victory Community Children's Educational Project	Southwark	towards the salary costs of sessional staff and running costs.	1	4,000
Wandsworth Pensioners' Forum <i>www.communigate.co.uk</i>	Wandsworth	towards the costs of the expanded newsletter and transportation costs.	1	4,860
Welcome Women's Club	Hillingdon	towards hall rental and heating costs.	1	2,000
Women's Counselling Service <i>www.womenscounselling.org</i>	Hounslow	towards the costs of the supervisor's and receptionist's fees and volunteers' expenses.	1	7,000

Supplementary & mother-tongue schools

African Youth Organisation <i>www.africanyouthorganisation.org.uk</i>	Newham	towards rent and volunteers' expenses for supplementary and mother-tongue classes.	2	8,000
Alborz School of Persian Language	Barnet	towards the operating costs of the Group's mother-tongue classes.	2	14,000
Beckton Islamic Association	Newham	towards the salary of a part-time tutor and operating costs of the supplementary and mother-tongue classes.	1	4,200
Congolese Community Welfare Association	Enfield	towards the establishment of the supplementary and mother-tongue school.	1	7,000
Crystal Vision Trust	Bromley	towards materials, equipment and volunteers' expenses.	1	5,000
Ealing Somali Welfare and Cultural Association	Ealing	towards the running costs.	2	14,000
Euphrates Education Foundation <i>www.alfurat.org.uk</i>	Kingston	towards the costs of teachers' fees.	1	6,000
Haringey Standing Committee on Community Languages	Haringey	towards the operating costs.	2	20,000
Horn Stars Sports Club	Brent	towards the costs of running the weekend school and homework support club.	1	7,000
Latin American Children's Project	Lambeth	towards the costs of educational materials, premises, refreshments and tutors' sessional fees.	1	3,800
Latin American School	Lambeth	towards tutors' fees and running costs.	1	3,000
London Sath Sangam	Harrow	towards teachers' fees and the running costs of the mother-tongue school.	1	900
North West Saturday School	Brent	towards the costs of the Saturday School.	2	13,900
Rockingham Somali Support Group	Southwark	towards some running costs.	1	4,000
Somali Advice and Education Group	Brent	towards running costs.	1	6,902
Somali Bravanese Welfare Association in Barnet <i>www.somalibravanese.com</i>	Barnet	for running costs and purchase of equipment.	1	7,000
Somali Homework Club	Greenwich	towards tutors' fees.	1	4,000
South Sudanese Community Association (UK) Ltd	Islington	towards the salaries of tutors for the supplementary classes.	2	6,000
St Peter's Bengali Association	Tower Hamlets	towards running costs and teaching materials.	1	2,500
Stepney Dynamic Youth	Tower Hamlets	towards educational materials, workshops for young people.	1	3,200
Supporting African Youth Development	Kingston	towards tutors' fees and running costs.	1	5,600
Sure Foundation Supplementary Saturday School	Southwark	towards teachers' sessional fees.	1	3,600

Disability groups

Brent Visually Handicapped Group	Brent	towards running costs.	2	9,000
Corali Dance Company	Southwark	towards sessional staffing fees and running costs.	2	12,000
Friends of African/Caribbean Carers and Sufferers of Dementia	Brent	towards the costs of appointing a part-time administrator.	2	11,903
Indian Cultural Society	Greenwich	towards running costs and equipment.	1	4,000
Magpie Dance <i>www.urgan-magpie.co.uk</i>	Bromley	towards running costs.	2	10,000
Mind Over Matter Community Care Charity <i>www.mindovermatter-charity.com</i>	Barnet	towards the purchase of a van.	1	7,000
News Talk Lambeth	Lambeth	towards the purchase of equipment and running costs.	1	6,000
North London Myalgic Encephalomyelitis Network	London Wide	towards the costs of yoga classes and for running costs.	1	3,840
PHAB Central London Club	Brent	over one year towards the costs of recruiting and training new volunteers.	1	3,710
Rain Trust <i>www.raintrust.org.uk</i>	London Wide	towards the production of publicity materials.	1	4,400
Rascals	Bark and Dag	towards the purchase of materials and equipment, and for tutors' salaries, training, volunteers' expenses and insurance.	2	8,000
Spiritual Empowerment Lifestyle Aspiring Haven	Southwark	to enable the group to develop its information provision.	1	4,000
War Victims Association	London Wide	towards rent, running costs and travel expenses.	1	6,000

Refugee & migrant groups

Active Women	Lambeth	towards running costs.	1	6,000
Afri-Caribbean People's Organisation	Brent	towards the costs of extending the lunch club..	1	12,620
African and Caribbean Family Support Project	Islington	towards the purchase of a computer, toys, books and for volunteers' expenses.	1	3,000
African Families Support Service	Kingston	towards its employment and recreational training programme.	2	8,000
Angolan Advice and Information Centre	Haringey	towards rent, volunteers' expenses and running costs.	1	4,000
Bosnia Herzegovina Club Brent	Brent	towards the appointment of a caseworker.	1	6,802
Brent Retired Brahmin Association	Brent	towards the costs of monthly meetings, outings and associated administration.	1	3,850
Busoga Association (UK)	Hackney	towards rent, training, volunteers' expenses and insurance.	1	5,000
Cameroon Community Welfare Development Association <i>www.geocities.com</i>	London Wide	towards rent and running costs.	1	3,000
Caribbean Indian Social and Cultural Association	Harrow	towards the purchase of traditional musical instruments, and for the costs of the Diwali celebration.	1	6,944

Community of Congolese Refugees in Great Britain	Newham	towards volunteers' expenses, stationery and insurance.	2	10,000
Community of Malian Refugees in the UK	Hackney	towards the costs of educational workshops for parents.	1	3,000
Community of Rwandese Refugees in UK	Hackney	towards the purchase of computers, for rent, volunteers' expenses and activities costs.	1	5,000
Craig Park Business and Training Centre	Enfield	towards running costs.	2	13,600
East African Women Community Organisation	Lewisham	towards office running costs and equipment.	1	4,000
East African Youth Group	Hounslow	towards running costs.	1	7,000
Edo State Women's Association	Islington	towards rent, volunteers' expenses and running costs.	1	2,000
Enfield Bangladesh Welfare Association	Enfield	towards the costs of a part-time advice worker.	1	12,000
Greenwich Kurdish Community Association	Greenwich	towards running costs.	1	6,000
Hackney Caribbean Elderly Organisation	Hackney	towards the purchase of equipment, furniture and fittings.	1	7,000
Horn of Africa Somali Women's Organisation	Hounslow	towards rent and running costs.	1	6,556
Hounslow Asian and African Youth Association	Hounslow	towards the purchase of office equipment.	1	6,874
Hounslow Somali Association	Hounslow	towards the salary costs of a part-time outreach worker.	1	5,881
Indoamerican Refugee and Migrant Organisation	Tower Hamlets	to enable the Organisation to establish a Community Interpreting and Advocacy Project.	1	5,500
Iranian Welfare Association of England and Wales	Barnet	towards the purchase of computers, for running costs and volunteers' expenses.	2	10,000
Kenyan Society of London	Hounslow	for volunteers' expenses, volunteers' and committee members' training costs and start up costs.	2	11,815
Kikwa Counselling Centre	Croydon	towards office rental.	1	4,500
Kongolese Centre for Information and Advice	Westminster	towards volunteers' expenses and training.	1	2,000
Lambeth Somali Community Association	Lambeth	towards running costs.	1	6,000
Lewisham Churches for Asylum Seekers	Lewisham	towards the travel voucher scheme and for the costs of a report.	1	7,000
Losanganya L'Analengo De London	Haringey	towards rent.	3	7,500
Mama and Dada Management Project	London Wide	towards running costs.	1	4,500
Mann Saffer	Hounslow	towards the costs of providing one-to-one counselling and complimentary therapies in London.	1	7,000
Merton Goan Senior Citizens Association	Merton	towards the costs of hot lunch subsidies.	1	3,000
Peace in Millennium Refugee Project	Newham	towards volunteers' expenses.	2	5,000
Rafidain Relief Association	Redbridge	towards rent, volunteers' expenses and running costs.	2	14,000
Research and Development Centre for Ethiopians in Britain	Camden	towards the costs of appointing a part-time co-ordinator.	1	7,000

Samaddoon Somali Support Group	Croydon	towards office equipment and furniture, publicity material, cleaner's costs and volunteers' expenses.	1	4,000
Somali Teachers Association	Ealing	towards the costs of appointing a part-time co-ordinator.	1	7,000
Tamil Action Committee UK	London Wide	towards equipment and running costs.	1	3,300
Trampoline Training and Employment Project	Kens and Chelsea	towards rent, volunteers' expenses and equipment.	1	3,555
Umubano Community Group <i>www.twiza.demon.co.uk/testarea/umbamo</i>	Tower Hamlets	to meet the costs of a website training programme.	1	5,450
Western Kurdistan Association	Hamm and Ful	towards rent, volunteers' expenses and for the purchase of a photocopier.	2	10,000
Windmill Park Youth Group	Ealing	to cover the costs of employing a drama tutor and drama assistant.	1	5,025

Continuation grants

South Island Workshop Arts and Crafts	Lambeth	towards sessional fees and staff training.	1	4,000
--	---------	--	---	-------

Trust for London total amount spent in 2001

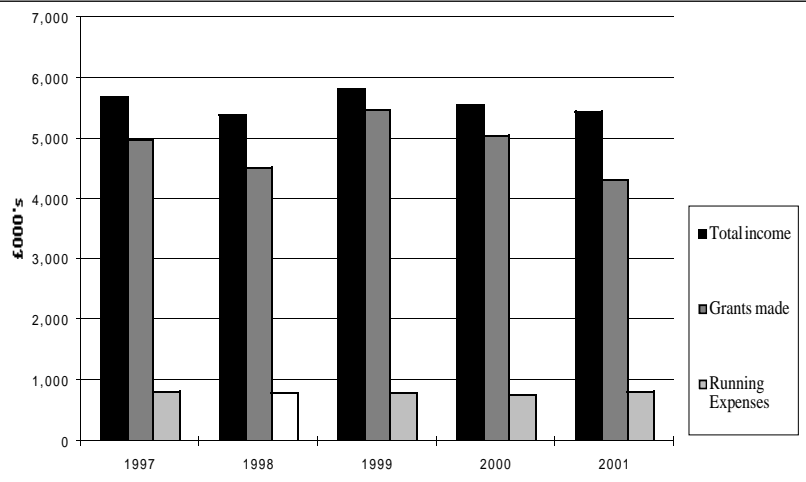
£694,676

The Trust is grateful to Gillian Davies and Tzeggai Yohannes Deres, co-opted members of the Grants Committee, for all their help in 2001.

CPF Accounts Summary

	2001 £'000s	2001 £'000s	2000 £'000s	2000 £'000s
Revenue funds brought forward		(93)		42
Grants receivable	-		-	
Income from investment properties	3,835		3,676	
Income from other investments	1,616		1,870	
	5,451		5,546	
Expenditure	(814)		(766)	
Net income		4,637		4,780
Available for distribution		4,544		4,822
Grants made		(4,576)		(4,986)
Other distributions		4		(82)
Write backs		262		30
Net grants made		(4,310)		(5,038)
Net movement in funds		234		(216)
Transfer from endowment fund		124		123
Balance carried forward		358		(93)
Revenue assets		358		(93)
Endowment assets		103,464		101,575
Total assets		103,822		101,482

Income and expenditure 1997-2001



Auditors' statement to the Trustees of City Parochial Foundation. We have examined the summarised financial statements set out above. **Respective responsibilities of Trustees and Auditors** You are responsible as trustees for the preparation of the summarised financial statements. We have agreed to report to you on their consistency with the full financial statements, on which we reported on 26 April 2002.

Basis of opinion We have carried out the procedures we consider necessary to ascertain whether the summarised financial statements are consistent with the full financial statements from which they have been prepared.

Opinion In our opinion the summarised financial statements are consistent with the full financial statements for the year ended 31 December 2001.

KPMG

Chartered Accountants, Registered Auditors
26 April 2002

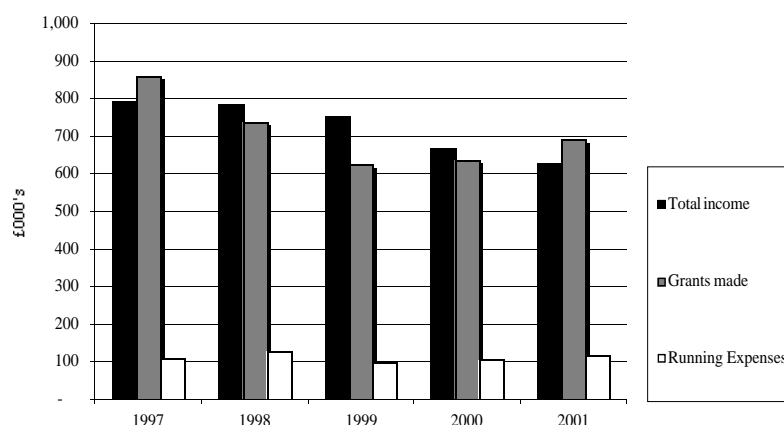
These accounts are a summary of information relating to the Central Fund of the charity extracted from the Annual Accounts. These summarised accounts may not contain sufficient information to allow for a full understanding of the financial affairs of the charity. The full Annual Accounts, the Auditors' Report on those accounts and the Trustees' Annual Report were approved on 26th April 2002 and have been submitted to the Charity Commission. The Auditors' Report was unqualified. Copies of the Trustees' Report and Financial Statements can be obtained from the Clerk at 6 Middle Street, London EC1A 7PH.

On behalf of the Trustees
Professor Gerald Manners
Chairman

TFL Accounts Summary

	2001 £'000s	2001 £'000s	2000 £'000s	2000 £'000s
Revenue funds brought forward		-		17
Income from investment portfolio	628		659	
Other investment income	2		9	
Other grant income	-		-	
	630		668	
Expenditure	(118)		(105)	
Net income		512		563
Available for distribution		512		580
Grants made		(695)		(641)
Write backs		4		4
Net grants made		(691)		(637)
Net movement in funds		(179)		(57)
Transfer from endowment fund		179		57
Balance carried forward		-		-
Revenue assets		-		-
Endowment assets		17,290		19,945
Total assets		17,290		19,945

Income and expenditure 1997-2001



Auditors' statement to the Trustee of the Trust for London We have examined the summarised financial statements set out above.

Respective responsibilities of the Trustee and Auditors You are responsible as the trustee for the preparation of the summarised financial statements. We have agreed to report to you on their consistency with the full financial statements, on which we reported on 26 April 2002.

Basis of opinion We have carried out the procedures we consider necessary to ascertain whether the summarised financial statements are consistent with the full financial statements from which they have been prepared.

Opinion In our opinion the summarised financial statements are consistent with the full financial statements for the year ended 31 December 2001.

KPMG
Chartered Accountants, Registered Auditors
26 April 2002

These accounts are a summary of information extracted from the Annual Accounts. These summarised accounts may not contain sufficient information to allow for a full understanding of the financial affairs of the charity. The full Annual Accounts, the Auditors' Report on those accounts and the Trustee's Annual Report were approved on 26th April 2002 and have been submitted to the Charity Commission. The Auditors' Report was unqualified. Copies of the Trustee's Report and Financial Statements can be obtained from the Secretary at 6 Middle Street, London EC1A 7PH.

On behalf of the Trustee

Professor Gerald Manners
Chairman